

THIS INSTRUMENT PREPARED BY  
DAVID P. LINDLEY  
OF  
**CAULFIELD and WHEELER, INC.**  
SURVEYORS - ENGINEERS - PLANNERS  
7900 GLADES ROAD, SUITE 100  
BOCA RATON, FLORIDA 33434 - (561)392-1991

# PEBB PIONEER

BEING A REPLAT OF TRACT 19, TRACT 20, THE WEST HALF (W.1/2) OF TRACT 21 AND THAT PORTION OF THE 30.00 FOOT ROAD RIGHT-OF-WAY LYING BETWEEN SAID TRACTS 20 AND 21, BLOCK 10, THE PALM BEACH FARMS COMPANY PLAT NO. 3, AS RECORDED IN PLAT BOOK 2, PAGES 45 THROUGH 54, PALM BEACH COUNTY, FLORIDA, LYING IN SECTION 6, TOWNSHIP 44 SOUTH, RANGE 42 EAST, VILLAGE OF ROYAL PALM BEACH, PALM BEACH COUNTY, FLORIDA.

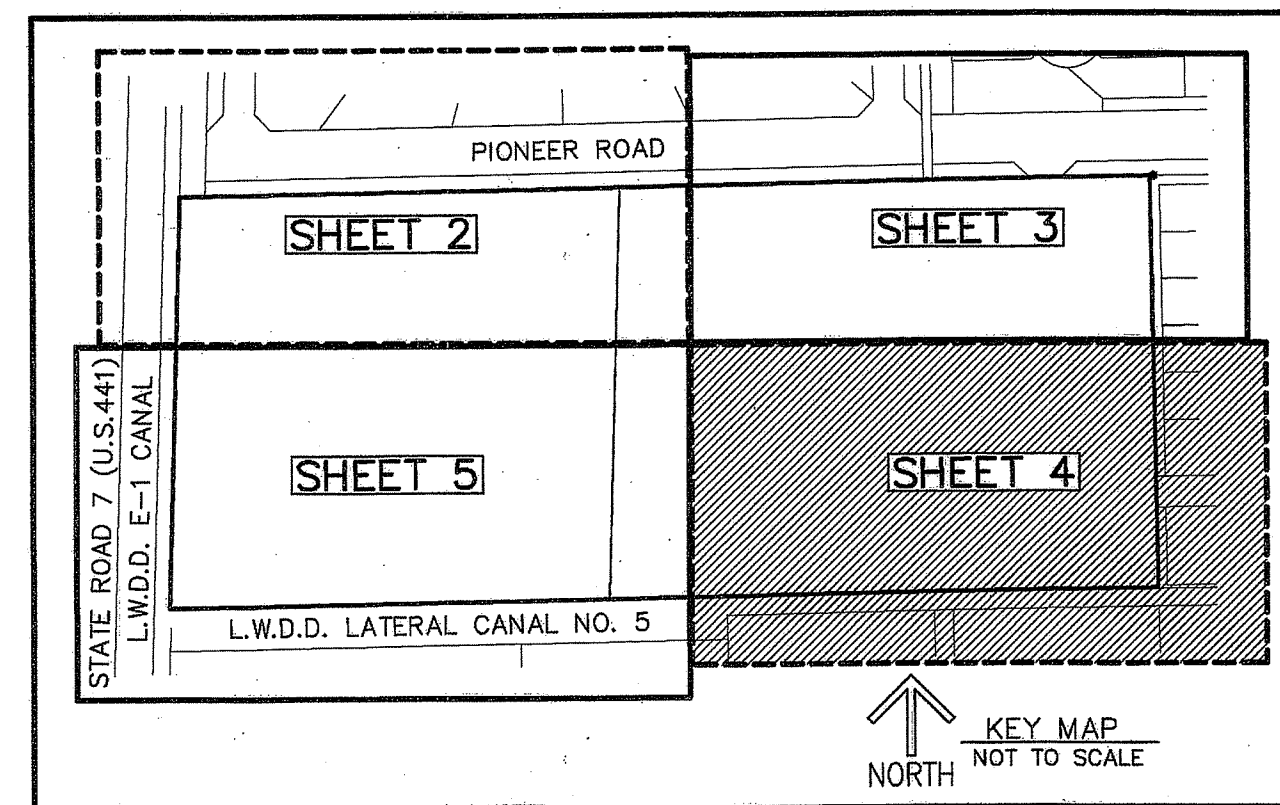
110

STATE OF FLORIDA  
COUNTY OF PALM BEACH  
THIS PLAT WAS FILED FOR  
RECORD AT \_\_\_\_\_ M.  
THIS \_\_\_\_\_ DAY OF \_\_\_\_\_  
A.D. 201\_\_\_\_ AND DULY RECORDED  
IN PLAT BOOK \_\_\_\_\_ ON  
PAGES \_\_\_\_\_ AND \_\_\_\_\_

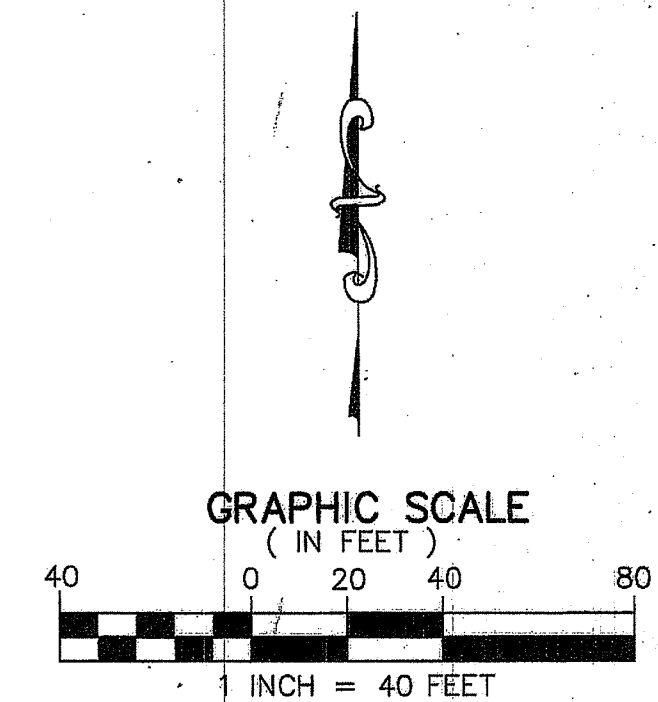
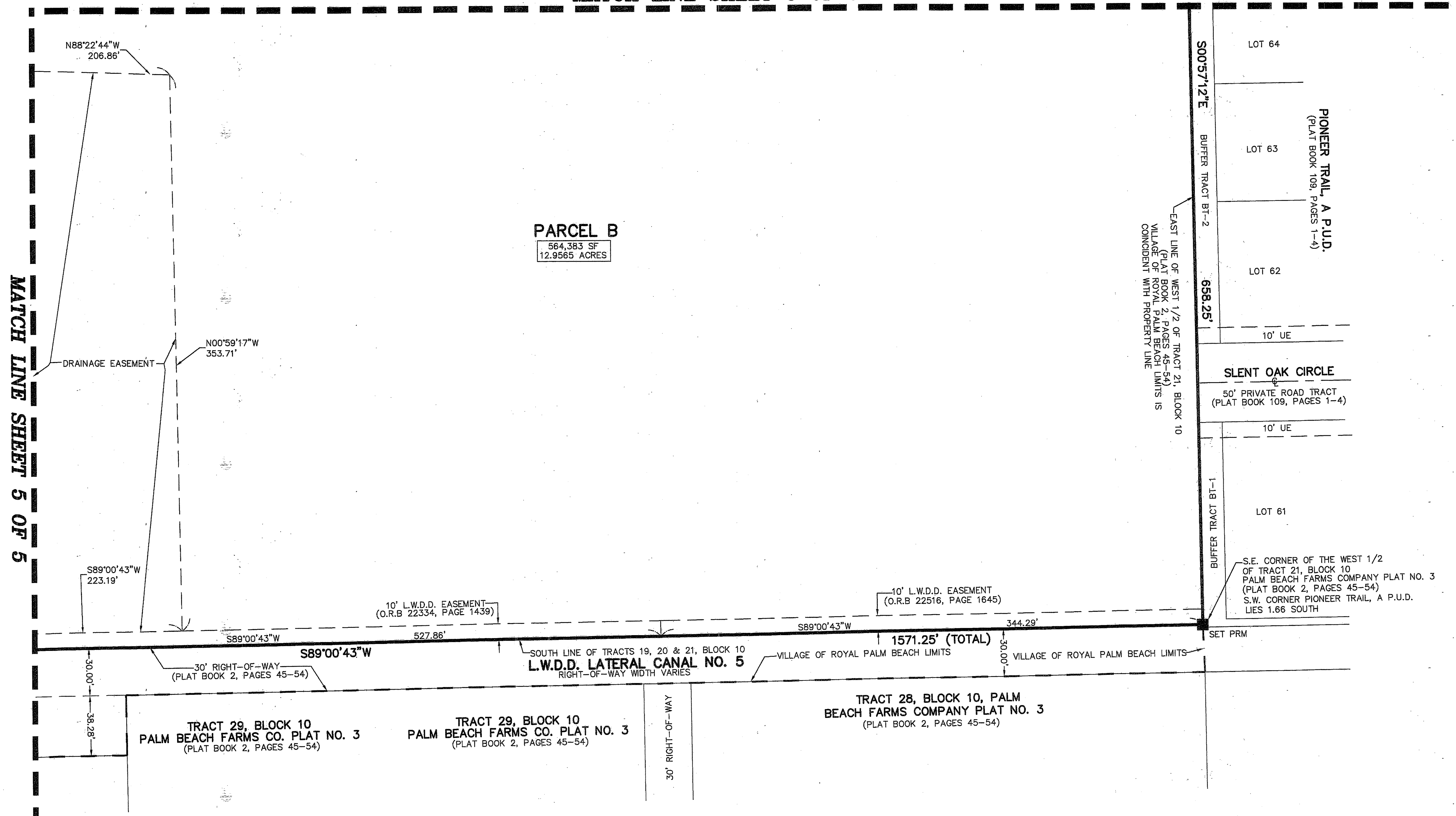
SHARON R. BOCK  
CLERK AND COMPTROLLER

BY: \_\_\_\_\_  
DEPUTY CLERK

**SHEET 4 OF 5**



**MATCH LINE SHEET 3 OF 5**



- LEGEND/ABBREVIATIONS**
- CL - CENTERLINE
  - Δ - DELTA (CENTRAL ANGLE)
  - DE - DRAINAGE EASEMENT
  - E - EASTING
  - FPL - FLORIDA POWER & LIGHT CO.
  - L - ARC LENGTH
  - LAE - LIMITED ACCESS EASEMENT
  - LBE - LANDSCAPE BUFFER EASEMENT
  - LB - LICENSED BUSINESS
  - LSE - LIFT STATION EASEMENT
  - L.W.D.D. - LAKE WORTH DRAINAGE DISTRICT
  - O.R.B. - OFFICIAL RECORD BOOK
  - PBCUE - PALM BEACH COUNTY UTILITY EASEMENT
  - R - RADIUS
  - UE - UTILITY EASEMENT
  - PRM - DENOTES PERMANENT REFERENCE MONUMENT  
4" x 4" x 24" CONCRETE MONUMENT WITH  
ALUMINUM DISK STAMPED "C&W FRM LB3591"